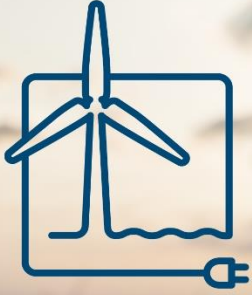


LLW Mariner Update #1: 06-MAR-2023



Leading Light Wind



Leading Light Wind (LLW) Offshore Wind Lease OCS-A 0542

LLW secured lease OCS-A 0542 in 2022. Development activities in the approximately 84,000-acre lease have begun with the intent of providing over 2 gigawatts of offshore renewable energy to the region.

Survey Operations to Commence in March 2023

Mariners in the region are advised that the survey vessel M/V Go Explorer will be conducting benthic sampling at fixed locations in the waters offshore of New York and New Jersey in the New York Bight beginning on or about March 17, 2023. All survey work will be performed in federal waters, within the lease area, and along potential export cable corridors. This portion of the habitat mapping survey will consist of grab samples with sediment imaging using video and sediment profiling cameras. The vessel will not be towing any survey gear, and vessel speeds will be 10 knots or less during transits between sampling stations.

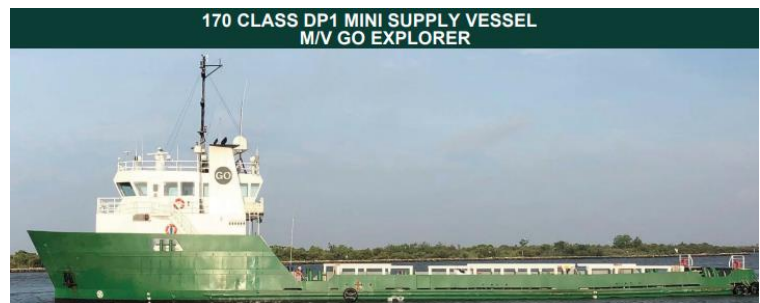
Although not required for benthic survey operations, out of an abundance of caution LLW will deploy Protected Species Observers (PSOs) as environmental monitors onboard the Go Explorer. The PSOs will monitor the area around the vessel during survey operations and vessel transits, recording observations of protected species, including marine mammals.

In spring of 2023, LLW will initiate its Geophysical and Geotechnical (G&G) survey operations. Future Mariner Updates will be issued with information on future and ongoing activities. Please consult the [USCG 5th District Local Notice to Mariners](#) for additional information on offshore activity and, as always, please adhere to the USCG Rules of the Road for mariners: <https://www.dco.uscg.mil/NavRules/>.

If you believe your fishing gear was lost or damaged as a result of LLW survey activities, please alert the project Fisheries Liaison (contact info on next page) and complete the Fishing Gear Damage or Loss Claim Form, which can be found on the LLW Webpage: <https://leadinglightwind.com/mariners>.

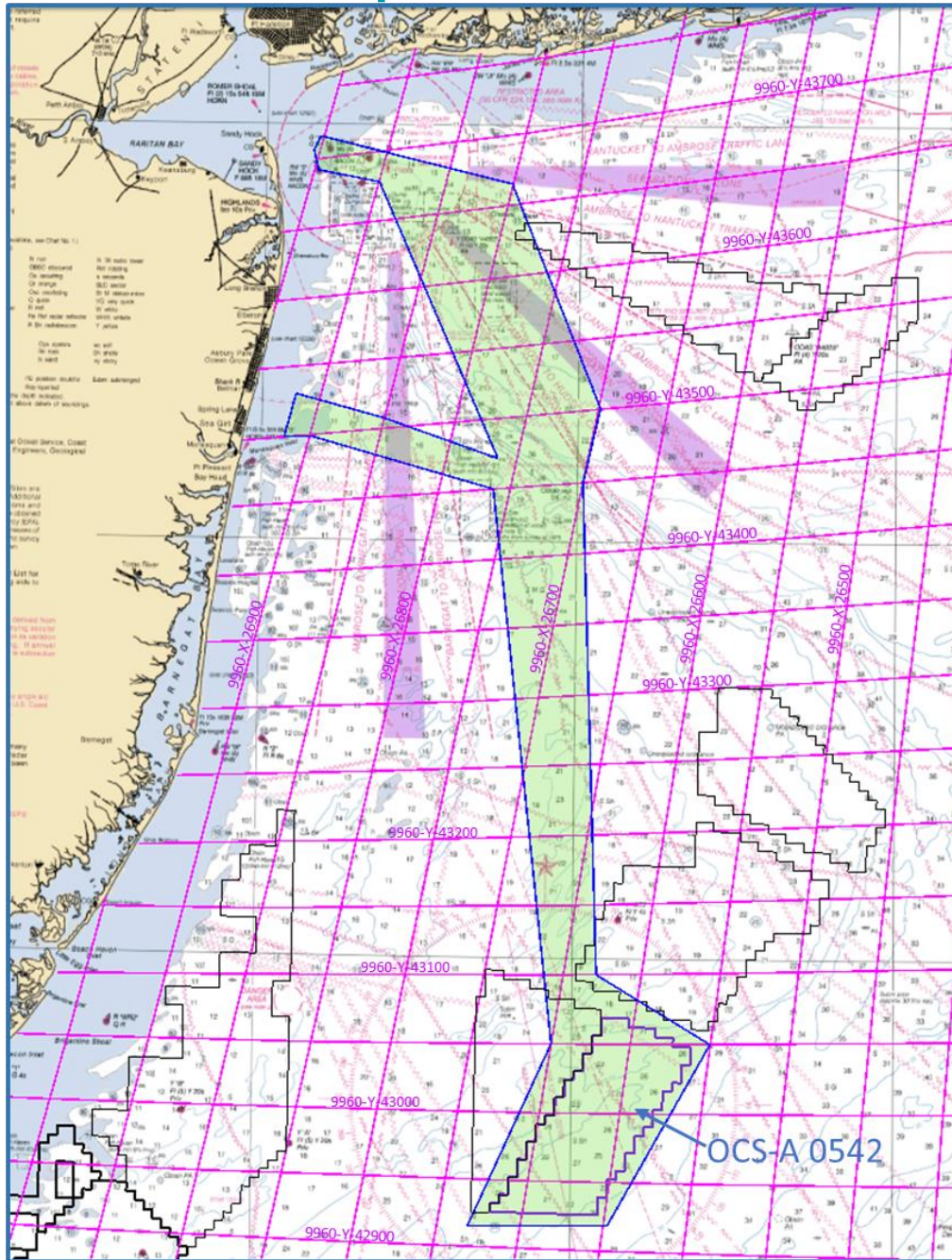
M/V GO EXPLORER

- Call Sign: WDM7092
- MMSI: 368230820
- IMO: 9469405
- Flag: USA
- LOA: 150 ft
- Beam: 36 ft



Mariners transiting or fishing in the survey area are requested to give a wide berth to the survey vessel, which may have limited maneuverability while sampling is being conducted. Mariners should operate in a manner that will not endanger themselves, the survey vessel or its equipment, a 0.5 NM clearance is requested.

LLW Mariner Update #1: 06-MAR-2023



Contact Us

LLW remains committed to maintaining communications with fishing communities and other mariners in the area via these periodic updates, dock visits, informational speaking engagements, and the additional information posted on the [LLW Mariners Website](http://www.leadinglightwind.com/mariners) ([leadinglightwind.com/mariners](http://www.leadinglightwind.com/mariners)). Mariners are also encouraged to contact LLW's Fisheries Liaisons with any specific questions about project activities in relation to fisheries.

Sarah Hudak
Fisheries Liaison Officer
919-302- 8559
sarahhudak@leadinglightwind.com

Ron Larsen
Fisheries Liaison Support
570-242-5023
ronlarsen@searisksolutions.com