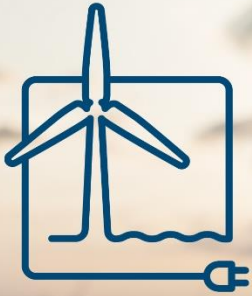


LLW Mariner Update #2: 18-APR-2023



Leading Light Wind



Leading Light Wind (LLW) Offshore Wind Lease OCS-A 0542

LLW secured lease OCS-A 0542 in 2022. Development activities in the approximately 84,000-acre lease have begun with the intent of providing over 2 gigawatts of offshore renewable energy to the region. LLW is located approximately 40 nautical miles east of Atlantic City, NJ and 75 nautical miles south of Long Island, NY.

Geophysical Survey Operations to Commence in April 2023

Mariners in the region are advised that the M/V Go Explorer will be conducting geophysical survey operations within the lease area and along potential export cable corridors commencing on or about **April 23, 2023**. Survey activities are anticipated to last approximately 6 months, with additional vessels joining the program at a later date.

The objectives of the geophysical survey are to collect detailed imaging of the seabed in order to identify seabed features or obstructions, areas of potential archaeological interest, existing subsea infrastructure, and potential unexploded ordnance. This information will be used to inform the engineering and layout of the planned windfarm and cable routes.

LLW will deploy Protected Species Observers (PSOs) on the Go Explorer to monitor the area around the vessel during survey operations and transits. The PSOs will have authority to call for operational shutdowns and/or strike avoidance maneuvers if a protected species is observed within the vessel's exclusion area.

Additionally, a fisheries team consisting of an onshore Fisheries Liaison, an Offshore Fisheries Liaison Representative (OFLR), and a scout vessel will help to avoid and/or minimize the potential for interactions with fishing gear. The contact information for the Fisheries Liaisons is given below, the OFLR can be reached by hailing the survey vessel, and the scout vessel, F/V Karoline Marie, can also be hailed directly via VHF.



M/V GO EXPLORER

- Call Sign: WDM7092
- Flag: USA
- MMSI: 368230820
- LOA: 150 ft
- IMO: 9469405
- Beam: 36 ft



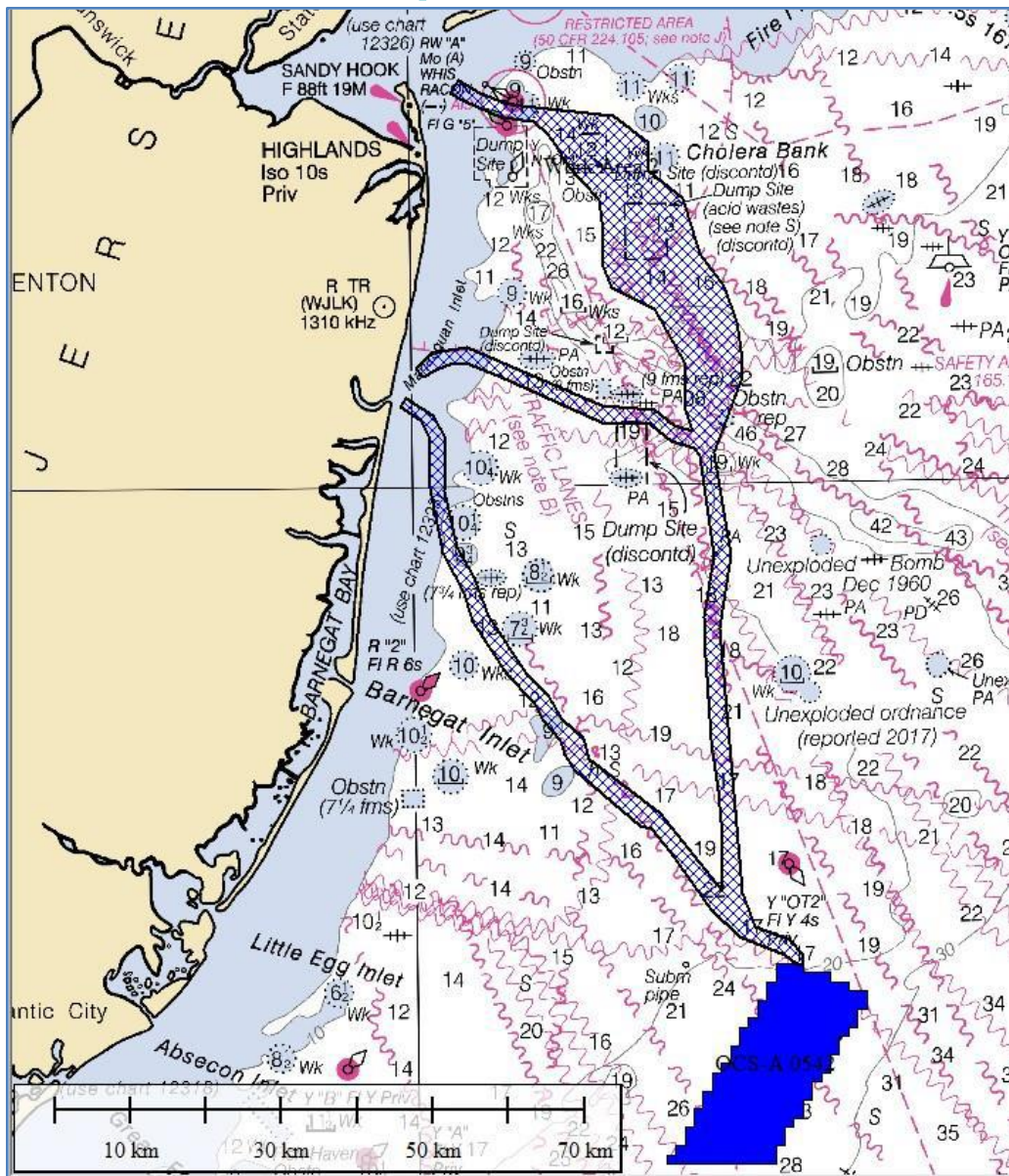
F/V KAROLINE MARIE

- Call Sign: WDE8258
- Flag: USA
- MMSI: 367403380
- LOA: 46 ft
- IMO: N/A
- Beam: 20 ft

If you believe your fishing gear was lost or damaged as a result of LLW survey activities, please alert the project Fisheries Liaison and complete a Fishing Gear Damage or Loss claim form which can be found on the LLW Webpage: <https://leadinglightwind.com/mariners>

Future Mariner Updates will be issued with information on future and ongoing activities. Please consult the [USCG 5th District Local Notice to Mariners](#) for additional information on offshore activity and, as always, please adhere to the USCG Rules of the Road for mariners: <https://www.dco.uscg.mil/NavRules/>

LLW Mariner Update #2: 18-APR-2023



Mariners transiting or fishing in the survey area are requested to give a wide berth to the survey vessel, which may have limited maneuverability while surveying. Mariners should operate in a manner that will not endanger themselves, the survey vessel or its equipment, a 0.5 NM clearance is requested.

Contact Us

Leading Light Wind remains committed to maintaining communications with fishing communities and other mariners in the area via these periodic updates, dock visits, informational speaking engagements and the additional information posted on the [LLW Mariners Website](http://www.leadinglightwind.com/mariners) (leadinglightwind.com/mariners). Mariners are also encouraged to contact Leading Light Wind's Fisheries Liaisons with any specific questions about Project activities in relation to fisheries.

Sarah Hudak
Fisheries Liaison Officer
919-302-8559
sarahhudak@leadinglightwind.com

Ron Larsen
Fisheries Liaison Support
570-242-5023
ronlarsen@searisksolutions.com

Additional project information is available on the Leading Light Wind web page:
www.leadinglightwind.com