

## Leading Light Wind



### Leading Light Wind (LLW) Offshore Wind Lease OCS-A 0542

LLW secured lease OCS-A 0542 in 2022. Development activities in the approximately 84,000-acre lease have begun with the intent of providing over 2 gigawatts of offshore renewable energy to the region. LLW is located approximately 40 nautical miles east of Atlantic City, NJ and 75 nautical miles south of Long Island, NY.

### Geophysical Survey Operations Ongoing through Fall 2023

Mariners in the region are advised that the **M/V GO Explorer**, **M/V GO Seeker**, and **R/V Westerly** will be conducting geophysical survey operations within the lease area and along potential export cable corridors through **fall 2023**.

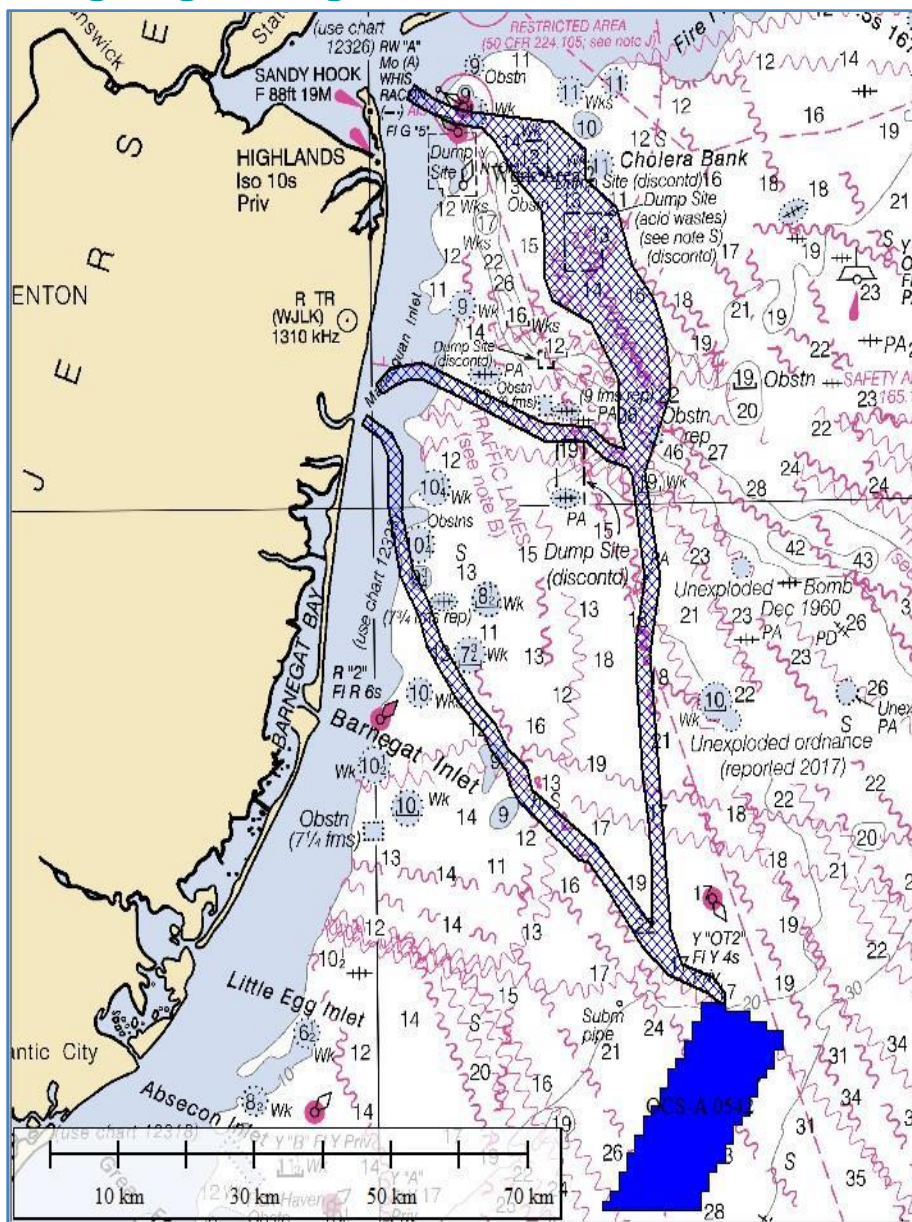
The objectives of the geophysical survey are to collect detailed imaging of the seabed in order to identify seabed features or obstructions, areas of potential archaeological interest, existing subsea infrastructure, and potential unexploded ordinance. This information will be used to inform the engineering and layout of the planned wind farm and cable routes.

**Mariners transiting or fishing in the survey area are requested to give a wide berth to the survey vessel, which may have limited maneuverability while surveying. Mariners should operate in a manner that will not endanger themselves, the survey vessel, or its equipment; a 0.5 NM clearance is requested.**

Future Mariner Updates will be issued with information on planned and ongoing activities. Please consult the [USCG 5th District Local Notice to Mariners](#) for additional information on offshore activity and, as always, please adhere to the USCG Rules of the Road for mariners:

[www.dco.uscg.mil/NavRules/](http://www.dco.uscg.mil/NavRules/).

If you believe your fishing gear was lost or damaged as a result of LLW survey activities, please alert the project Fisheries Liaison and complete a Fishing Gear Damage or Loss claim form which can be found on the LLW Webpage: [www.leadinglightwind.com/mariners](http://www.leadinglightwind.com/mariners).



LLW will deploy Protected Species Observers (PSOs) onboard survey vessels to monitor the area during survey operations and transits. The PSOs will have authority to call for operational shutdowns and/or strike avoidance maneuvers if a protected species is observed within the vessel's exclusion area.

Additionally, a fisheries team consisting of an onshore Fisheries Liaison, Offshore Fisheries Liaison Representatives (OFLRs), and scout vessels (F/V Karoline Marie and F/V Moonshine) will help to avoid and/or minimize the potential for interactions with fishing gear. Survey and scout vessels can be hailed directly through VHF (Ch. 16) or by contacting the fisheries team.

## Survey Vessels



### M/V GO EXPLORER

**-Call Sign:** WDM7092 **-Flag:** USA  
**-MMSI:** 368230820 **-LOA:** 170 ft  
**-IMO:** 9469405 **-Beam:** 36 ft



### M/V GO SEEKER

**-Call Sign:** WDN3304 **-Flag:** USA  
**-MMSI:** 368270390 **-LOA:** 170 ft  
**-IMO:** 9579157 **-Beam:** 36 ft



### R/V WESTERLY

**-Call Sign:** WDF7918 **-Flag:** USA  
**-MMSI:** 367489490 **-LOA:** 45 ft  
**-IMO:** N/A **-Beam:** 16 ft

## Scout Vessels



### F/V KAROLINE MARIE

**-Call Sign:** WDE8258 **-Flag:** USA  
**-MMSI:** 367403380 **-LOA:** 44 ft  
**-IMO:** N/A **-Beam:** 16 ft



### F/V MOONSHINE

**-Call Sign:** N/A **-Flag:** USA  
**-MMSI:** 338195648 **-LOA:** 43 ft  
**-IMO:** N/A **-Beam:** 16 ft

## Contact Us

Leading Light Wind remains committed to maintaining communications with fishing communities and other mariners in the area via these periodic updates, dock visits, informational speaking engagements, and the additional information posted on [Mariners Page](#) on the [LLW website](#). Mariners are also encouraged to contact Leading Light Wind's Fisheries Liaisons with any specific questions about Project activities in relation to fisheries.

#### Sarah Hudak

*Fisheries Liaison (onshore)*  
919-302-8559

[sarahhudak@leadinglightwind.com](mailto:sarahhudak@leadinglightwind.com)

#### Ron Larsen

*Fisheries Liaison Support*  
570-242-5023

[ronlarsen@searisksolutions.com](mailto:ronlarsen@searisksolutions.com)

#### Capt. Tom Hill

*Scout, F/V Karoline Marie*  
978-697-5821

[ThomasGHill61@yahoo.com](mailto:ThomasGHill61@yahoo.com)

#### Capt. Spurge Katowski

*Scout, F/V Moonshine*  
[Spurge13@aol.com](mailto:Spurge13@aol.com)

#### Kelly Lewis

*OFLR, M/V GO Explorer*  
[OFL7@offshorewfs.com](mailto:OFL7@offshorewfs.com)

#### Chris Garraty

*OFLR, M/V GO Seeker*  
[OFL11@offshorewfs.com](mailto:OFL11@offshorewfs.com)

Additional project information is available on the LLW web page: [www.leadinglightwind.com](http://www.leadinglightwind.com)