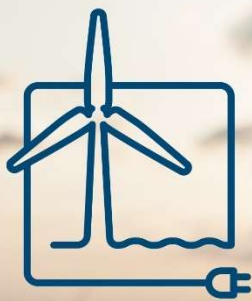


# LLW Mariner Update #4: 11-JULY-2023



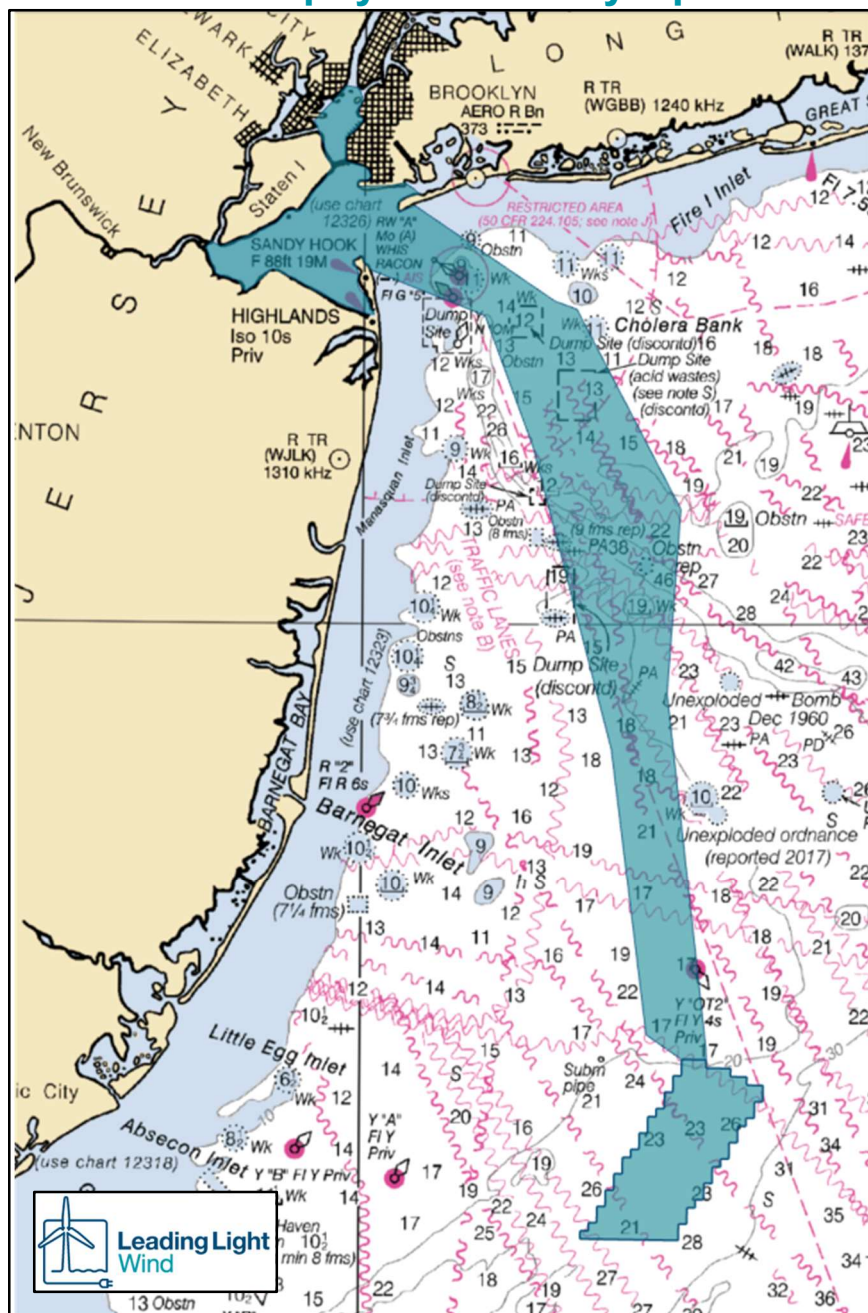
## Leading Light Wind



### Leading Light Wind (LLW) Offshore Wind Lease OCS-A 0542

LLW secured lease OCS-A 0542 in 2022. Development activities in the approximately 84,000-acre lease have begun with the intent of providing over 2 gigawatts (GW) of offshore renewable energy to the region. LLW is located approximately 40 nautical miles east of Atlantic City, NJ and 75 nautical miles south of Long Island, NY.

### Benthic & Geophysical Survey Operations Ongoing through Fall 2023



Mariners in the region are advised that ongoing geophysical surveys onboard the **M/V GO Seeker** are expected to conclude in July. The **M/V GO Explorer** and **R/V Westerly** will be conducting benthic and geophysical survey operations within the lease area and along potential export cable corridors through **fall 2023**.

**Mariners transiting or fishing in the survey area are requested to give a wide berth to the survey vessels, which may have limited maneuverability while surveying. Mariners should operate in a manner that will not endanger themselves, the survey vessels, or its equipment; 0.5 NM clearance is requested.**

Vessel speeds will be 10 knots or less during transits to/from port and between sampling stations. The information from these surveys will be used to inform the engineering and layout of the planned wind farm and cable routes.

LLW will deploy Protected Species Observers (PSOs) onboard all survey vessels. Additionally, an onshore Fisheries Liaison, scout vessel (**F/V Moonshine**), and offshore Fisheries Liaison (for geophysical surveys) will help to avoid and/or minimize the potential for interactions with fishing gear. Survey and scout vessels can be hailed directly through VHF (CH 16) or by contacting the fisheries team.

Future Mariner Updates will be issued with information on planned and ongoing activities. Please consult the [Local Notice to Mariners for USCG Districts 1 and 5](#) for additional information on offshore activity and, as always, please adhere to the USCG Rules of the Road for mariners: [www.dco.uscg.mil/NavRules/](http://www.dco.uscg.mil/NavRules/).



## M/V GO EXPLORER

**-Call Sign:** WDM7092      **-Flag:** USA  
**-MMSI:** 368230820      **-LOA:** 170 ft  
**-IMO:** 9469405      **-Beam:** 36 ft



## M/V GO SEEKER

**-Call Sign:** WDN3304      **-Flag:** USA  
**-MMSI:** 368270390      **-LOA:** 170 ft  
**-IMO:** 9579157      **-Beam:** 36 ft



## R/V WESTERLY

**-Call Sign:** WDF7918      **-Flag:** USA  
**-MMSI:** 367489490      **-LOA:** 45 ft  
**-IMO:** N/A      **-Beam:** 16 ft



## F/V MOONSHINE

**-Call Sign:** N/A      **-Flag:** USA  
**-MMSI:** 338195648      **-LOA:** 43 ft  
**-IMO:** N/A      **-Beam:** 16 ft

## Contact Us

Leading Light Wind remains committed to maintaining communications with fishing communities and other mariners in the area via these periodic updates, dock visits, informational speaking engagements, and the additional information posted on [Mariners Page](#) on the [LLW website](#). Mariners are also encouraged to contact Leading Light Wind's Fisheries Liaisons with any specific questions about project activities in relation to fisheries.

If you believe your fishing gear was lost or damaged as a result of LLW survey activities, please alert the project Fisheries Liaison and complete a Fishing Gear Damage or Loss claim form which can be found on the LLW Webpage: [www.leadinglightwind.com/mariners](http://www.leadinglightwind.com/mariners).

**Sarah Hudak**  
*Fisheries Liaison (onshore)*  
919-302-8559  
[sarahhudak@leadinglightwind.com](mailto:sarahhudak@leadinglightwind.com)

**Ron Larsen**  
*Fisheries Liaison Support*  
570-242-5023  
[ronlarsen@searisksolutions.com](mailto:ronlarsen@searisksolutions.com)

**Capt. Spurge Krasowski**  
*Scout, F/V Moonshine*  
[Spurge13@aol.com](mailto:Spurge13@aol.com)

Additional project information is available on the LLW web page: [www.leadinglightwind.com](http://www.leadinglightwind.com)