

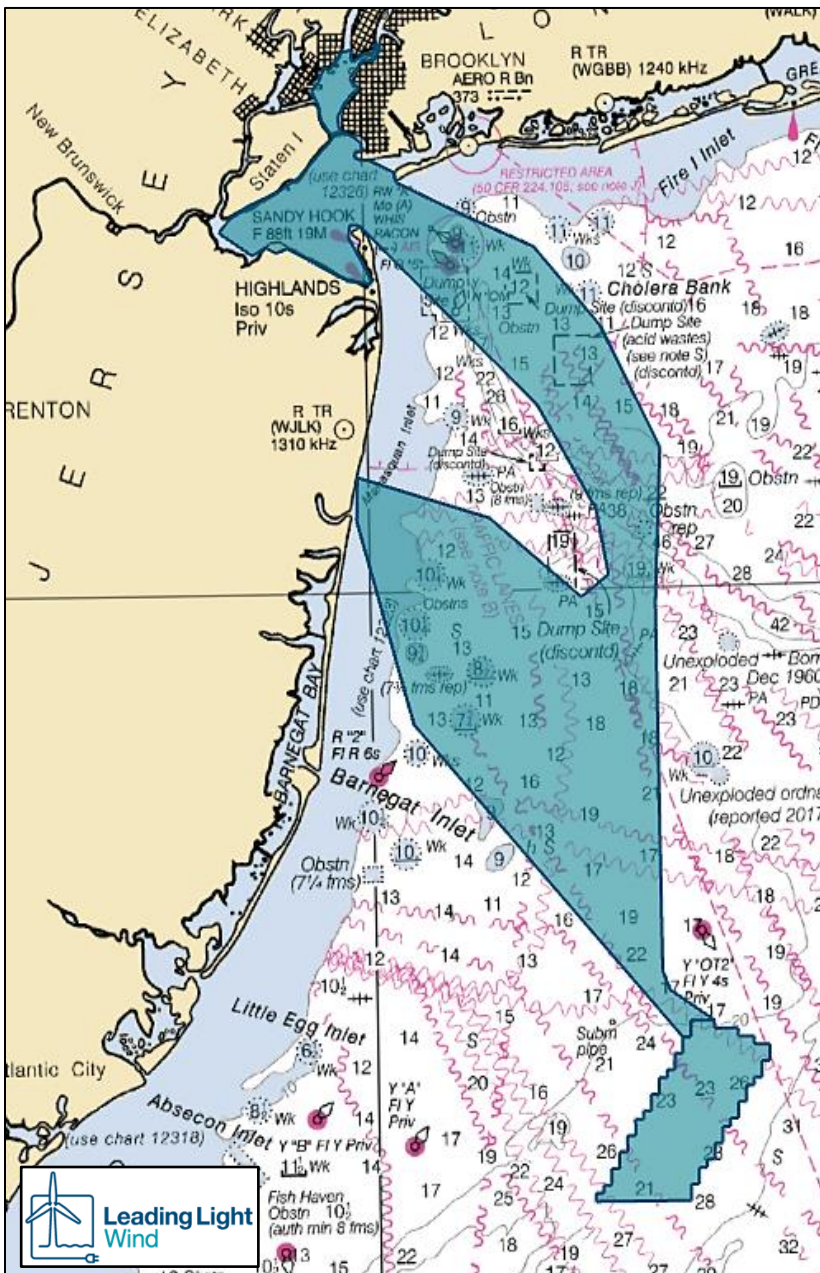
Leading Light Wind



Leading Light Wind (LLW) Offshore Wind Lease OCS-A 0542

LLW secured lease OCS-A 0542 in 2022. Development activities in the approximately 84,000-acre lease have begun with the intent of providing over 2 gigawatts (GW) of offshore renewable energy to the region. LLW is located approximately 40 nautical miles east of Atlantic City, NJ and 75 nautical miles south of Long Island, NY.

Seabed Characterization Surveys Ongoing Through Early 2024



Mariners are advised of the following site characterization surveys for the Leading Light Wind project through early 2024:

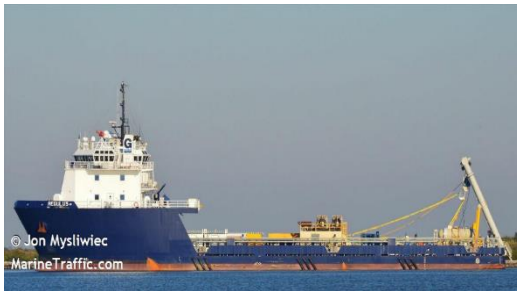
- Geotechnical operations are ongoing aboard the **PSV Regulus** and **RV Fugro Explorer** through early 2024. These surveys do not involve any towed survey gear.
- Benthic operations aboard the **MV GO Pursuit** will commence November 2023 and continue into December 2023.
- Geophysical operations are ongoing in the offshore Lease aboard the **MV GO Explorer** and will continue through November 2023.

Vessel speeds will be 10 knots or less during transits to/from port and between sampling stations. The information from these surveys will be used to inform the engineering and layout of the planned wind farm and cable routes.

Protected Species Observers (PSOs) will be deployed onboard all survey vessels. The LLW Fisheries Team will provide fisheries briefings to survey vessel crew and continue communications with the fishing community to help avoid and/or minimize the potential for fishing gear interactions. Scout vessels will be deployed as necessary. Survey and scout vessels can be hailed directly via VHF (CH 16) or by contacting the fisheries team.

Mariners transiting or fishing in the survey area are requested to give a wide berth to the survey vessels, which may have limited maneuverability while surveying. Mariners should operate in a manner that will not endanger themselves, the survey vessels, or its equipment; 0.5 NM clearance is requested.

Future Mariner Updates will be issued to provide information on planned and ongoing activities. Please consult the [Local Notice to Mariners for USCG Districts 1 and 5](#) for additional information on offshore activity and, as always, please adhere to the USCG Rules of the Road for mariners: <https://www.dco.uscg.mil/NavRules/>.



PSV REGULUS

-Call Sign: WDG8927 **-Flag:** USA
-MMSI: 338060000 **-LOA:** 272 ft
-IMO: 9582324 **-Beam:** 58 ft



RV FUGRO EXPLORER

-Call Sign: 3FEV9 **-Flag:** Panama
-MMSI: 368230820 **-LOA:** 252 ft
-IMO: 9208564 **-Beam:** 52 ft



MV GO PURSUIT

-Call Sign: WDH6498 **-Flag:** USA
-MMSI: 367191410 **-LOA:** 170 ft
-IMO: 9458884 **-Beam:** 36 ft



MV GO EXPLORER

-Call Sign: WDM7092 **-Flag:** USA
-MMSI: 368230820 **-LOA:** 170 ft
-IMO: 9469405 **-Beam:** 36 ft

Contact Us

Leading Light Wind remains committed to maintaining communications with fishing communities and other mariners in the area via these periodic updates, dock visits, informational speaking engagements, and the additional information posted on [Mariners Page](#) on the [LLW website](#). Mariners are also encouraged to contact Leading Light Wind's Fisheries Liaisons with any specific questions about project activities in relation to fisheries.

If you believe your fishing gear was lost or damaged as a result of LLW survey activities, please alert the project Fisheries Liaison and complete a Fishing Gear Damage or Loss claim form which can be found on the LLW Webpage: www.leadinglightwind.com/mariners.

Sarah Hudak
Fisheries Liaison (onshore)
919-302-8559
sarahhudak@leadinglightwind.com

Ron Larsen
Fisheries Liaison Support
570-242-5023
ronlarsen@searisksolutions.com

Additional project information is available on the LLW web page: www.leadinglightwind.com